



THE RURAL HITCH

FIRST QUARTER 2012

**A publication of
Lakes Region
Mutual Fire Aid
Association**

Serving:

Alexandria
Alton
Andover
Ashland
Barnstead
Belmont
Bridgewater
Bristol
Campton
Center Harbor
Danbury
Dorchester
East Andover
Ellsworth
Franklin
Gilford
Gilmanton
Groton

Hebron
Hill
Holderness
Laconia
Meredith
Moultonborough
New Hampton
Northfield
Plymouth
Rumney
Sanbornton
Sandwich
Strafford
Thornton
Tilton
Warren
Waterville Valley
Wentworth



62 Communications Drive
Laconia, New Hampshire 03246
603.528.9111
www.lrmfa.org

Rick Heinis Honored For Forty Years of Service



Richard Heinis was honored during the March 29, 2012 Association meeting for his 40 years of service with the Lakes Region Mutual Fire Aid Association.

Rick began his career with LRMFA on March 20, 1972. He's seen many changes within the System during that time.

At the Association meeting, held at Meredith Fire Station and hosted by LRMFA, Chief Coordinator Jim Hayes presented him with a plaque. In addition, the Dispatchers at LRMFA had created a table

consisting of fire hose, an SCBA tank, a fire box appropriately numbered 72, and Rick's helmet. A few stories were shared by some of Rick's fellow long-timers. All-in-all, it was a great evening that was well attended by Association members. 🚒

**Rick with three Coordinators he has served with (left to right):
Doug Aiken, Rick, current Chief Coordinator Jim Hayes, and Ed Warfield.**



Grant Funding for Training

The New Hampshire Fire Academy is excited to announce the acquisition of grant funds specifically for "boots on the ground training." This "one time" money will give the New Hampshire first responder community an outstanding opportunity to raise the training and preparedness levels of full time, call, and volunteer first responders while keeping the training cost neutral to participating communities.

The unique "once-in-a-lifetime" funding of training is made possible by significant changes to the administering of funds from the Homeland Security Grant Program. Those taking part in a specific training program will be eligible for overtime and backfill costs.

This includes call departments' reimbursement for call salaries and volunteer first responders will receive a stipend, while full time department members will have the cost of their participation covered by overtime or backfill.

SPRING SALE PREPARE FOR BRUSH FIRE SEASON!

BERGERON
PROTECTIVE CLOTHING



\$145

**PGI Forestry
Pant**
Green Indura
Sm-XL



\$79

PGI Forestry Shirt
Yellow Indura
Sm-XL

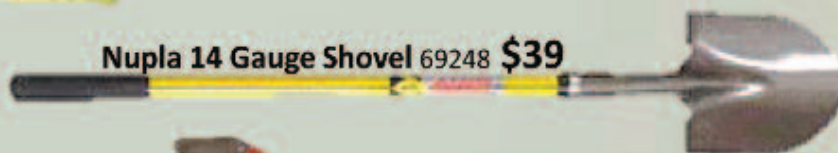


\$145

**PGI Forestry
Pant**
Yellow Indura
Sm-XL



Nupla Pulaski Axe 31676 \$49



Nupla 14 Gauge Shovel 69248 \$39



**Bullard Wildland
Fire Cap 24602
\$59**



Nupla Fire Rake 69214 \$48



Nupla McLeod Tool 69216 \$43

SERVING ALL YOUR FORESTRY NEEDS

1024 Suncook Valley Hwy, 5-D, Epsom, NH 03234

Phone 603.736.8500 Fax 603.736.9115

Board of Directors

EXECUTIVE COMMITTEE

Chief Rene Lefebvre
Chair
EAST ANDOVER

Dave Paquette
Secretary/Treasurer
DEP. CHIEF (RET.), ASHLAND

Chief John Fischer
HEBRON

Chief Ken Ward
RUMNEY

Chief Dave Bengtson
MOULTONBOROUGH

Warden Ed Maheux, *ex officio*
Association President

Alexandria Chief Mark Chevalier	Hebron Chief John Fischer
Alton Chief Scott Williams	Hill Chief Dee Ford
Andover Chief Chuck Ellis	Holderness Chief Eleanor Mardin
Ashland Chief Steve Heath	Laconia Chief Ken Erickson
Barnstead Chief Mark Tetreault	Meredith Chief Ken Jones
Belmont Chief David Parenti	Moultonborough Chief Dave Bengtson
Bridgewater Chief Don Atwood	New Hampton Chief Mike Drake
Bristol Chief Steve Yannuzzi	Northfield Steve Bluhm
Campton/ Thornton/Ellsworth Chief Dave Tobine	Plymouth Chief Casino Clogston
Center Harbor Chief John Schlemmer	Rumney Chief Ken Ward
Danbury Chief Tom Austin	Sanbornton Chief Paul Dexter
Dorchester Arthur Burdette	Sandwich Chief Louis Brunelle
East Andover Chief Rene Lefebvre	Strafford Chief Paul Stover
Franklin Chief Kevin LaChapelle	Tilton Chief Brad Ober
Gilford Chief Steve Carrier	Warren Chief Dave Riel
Gilmanton Chief Joe Hempel	Waterville Valley Chief Chris Hodges
Groton Chief Roger Thompson	Wentworth Chief Jeff Ames

Hill Wildland Fire Largest in Area for Many Years

The call came in at 8:57 a.m. on April 4, 2012: Smoke in the area of Tucker Road in East Andover. Eventually it was tracked down to March Hill in the town of Hill. March Hill is a steep, rocky, wooded area with some Class VI roads around it as well as some old logging roads. The entire state was dry as dust and the wind was blowing in several directions. Access to the fire was difficult. By the time it was extinguished the next day, over 75 acres had been burned, making it one of the larger wildland fires for many years.

The following departments participated:

LAKES REGION MUTUAL AID DEPARTMENTS

Hill Fire Department
East Andover Fire Department
Tilton-Northfield Fire Department
Sanbornton Fire Department
Bristol Fire Department
LRMFA Com. Center
Gilford Fire Department
New Hampton Fire Department
Bridgewater Fire Department

Andover Fire Department
Franklin Fire Department
Belmont Fire Department
Danbury Fire Department
Alexandria Fire Department
Campton-Thornton Fire Department
Meredith Fire Department
Barnstead Fire Department

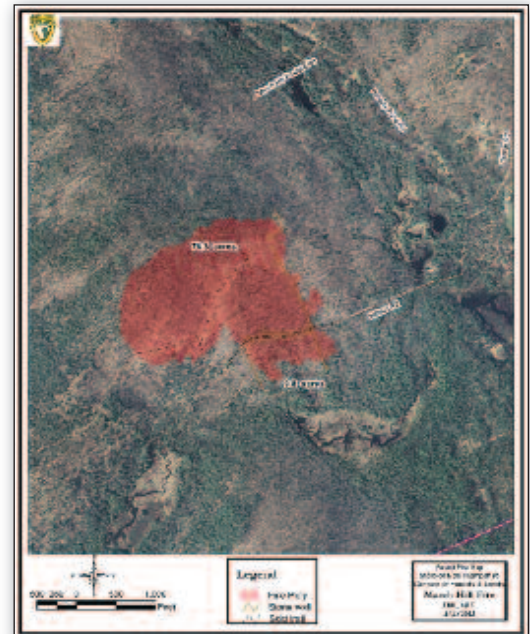
CAPITAL AREA MUTUAL AID DEPARTMENTS

Webster
Hopkinton
Warner
Concord

Boscawen
Bow
Canterbury

KEARSARGE MUTUAL AID DEPARTMENTS

Wilmot
New London



THE RURAL HITCH

is published quarterly by
Lakes Region
Mutual Fire Aid Association

Chief
James R. Hayes

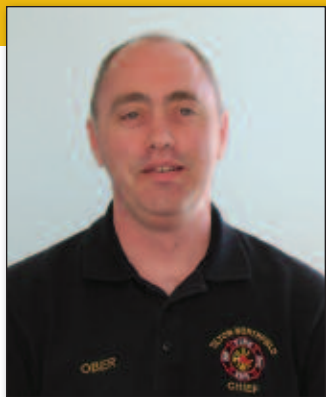
Editor
Debbie Kardaseski

Email all submissions to:
debbiek@lrmfa.org



Featured department...

Tilton-Northfield Fire & EMS



Chief Brad Ober
Tilton-Northfield Fire & EMS

Chief: Brad Ober
Address: 12 Center St. (Office)
Tilton, NH 03276
149 Park St.
Northfield, NH 03276
603.286.4781
Office
Hours: 8–4:30 Monday–Friday
Officers: Deputy Chief Mike Robinson
Fire Prevention Capt. Tim Joubert
Shift Capt. Tim Ames
Shift Capt. Greg Michaud
Shift Capt. David Hall
Kelly Day Shift Lt. Sean Valovanie
Call Company Lt. Chris Harris
Call Company Lt. Tom Beaulieu
Call Company Lt. Fred Greene
Apparatus: 3 Engines
2 Ambulances
1 Tanker
1 Heavy Rescue
1 Ladder
1 Pickup
1 Forestry
1 Command Vehicle
1 ATV
1 Boat

DEPARTMENT HISTORY

The Tilton-Northfield Fire & EMS has a long and well-documented history. Originally Northfield was part of the town of Canterbury. It separated and incorporated in 1780. There is no real evidence of a formal fire department in Northfield at that time, although it appears there may have been a small department made up of local businessmen in Tilton.

In 1828 four fire wards were elected and, in 1829 a set of fire regulations was drawn up which provided for the duties of fire wards and general safety provisions including storing ashes in iron or tin and placing them someplace that was not combustible. It was noted in 1857 voters were once again not in favor of an engine company at "The Bridge." However, in 1864, the citizens of Sanbornton Bridge voted to purchase a fire engine for \$300.

In 1869, Sanbornton Bridge was "set off" and became Tilton. However, it is recorded that the Tilton Fire Precinct was formed in 1867.



The villages were united in what was known as the FIRE PRECINCT, which was formed in 1867. At the time, fire apparatus consisted of two hand-engines. The large one had an eight-inch cylinder and required fifty men to properly operate. It threw a stream one hundred and sixty feet!

The Tilton Fire Department provided services during the 1800s. It is believed that with the hiring of Chief Herbert Dolley, the Tilton and Northfield Fire Department was formed. In 1912, land was purchased from the Town of Tilton to construct a fire house on "Church

Tilton-Northfield Fire & EMS Park Street Station.





Left: Horse-drawn apparatus in front of the Center Street Station. Right: The old and the “new” circa 1929.

Street.” In 1924, records indicate that the “Tilton Fire District” was the governing entity of the fire department.

Through the years, the Church Street building was added onto several times, resulting in the current station on what is now known as Center Street. It wasn’t until 1946 that the department became known as the Tilton-Northfield Fire District and at a recent meeting, the name was officially changed to Tilton-Northfield Fire & EMS.

In 1986, a second station was built on Park Street in Northfield. In 2005, the Winnisquam Fire Department was absorbed into the Belmont Fire Department. Winnisquam had serviced East Tilton and Lochmere, along with the Tilton-Northfield department. In 2010, Belmont closed the Winnisquam Station altogether. In 2005, Tilton-Northfield responded to a record-high call volume of 1,621.

A much more detailed history can be found on the Tilton-Northfield web site: www.tnfd.org.

THE DEPARTMENT TODAY

The Department today averages 1,500 calls per year with approximately 68% of them being medical calls. It is the second busiest department in the Lakes Region, with several major traffic routes running through town, including I-93 and Route 3. The Department services 40 square miles, 6 lakes

and ponds, and 65 miles of roads. Its coverage area is widespread and heavy traffic sometimes hampers response times.

The past few months have been difficult ones. On February 10, 2012 the department responded to a mobile home fire on Granite Street. The homeowner, who was on oxygen and smoking, perished. Two other family members were saved by working smoke detectors. The Chief attributed a recent inspection of the premises by Fire Prevention to saving two lives. The property was a rental unit and Fire Prevention’s job includes inspecting rental property for smoke detectors and other life safety codes.

Thirteen days later, the Department responded to a fire on the same street as the mobile home fire. A two-story brick house was well involved when they arrived, resulting in a second alarm. Originally it was thought there were two people inside but it was confirmed there was no one home. The house was a total loss but the adjacent barn was saved.

On a brighter note, the taxpayers voted to purchase a new Quint (ladder/engine) this year as well as a standby generator for the Center Street station. Chief Ober hopes to have the generator installed by June.

The Center Street station has had some interior renovations

recently, mainly cosmetic. The building is a hodge-podge of additions and needs to be replaced at some point. It is hoped a building committee will be put together in the coming year, which will come up with a long-term plan. The Chief feels it will be seven to ten years before a new building will be built. Another long-term goal of Chief Ober’s is the addition of one full-time person and a career deputy chief. The new fulltime person didn’t pass at this year’s town meeting.

The Park Street station is the department’s “call” station. The fulltime personnel are stationed at Center Street, which sometimes results in problems if a piece of apparatus is needed from the Park Street station. Someone has to go over and get it, then head to the incident, resulting in a delay. When asked why the Park Street station had been built so close to Center Street, the answer was it’s the geographic center of the district. Even so, response times to East Tilton and the Winnisquam area can be problematic.

THE CHIEF

Brad Ober is the first person in his family to become involved in the fire service. Somewhat on a lark, he and a group of friends joined the Ashland Fire Department right out of high school. Of the original

TILTON-NORTHFIELD FIRE & EMS CONT. ON PAGE 8

EMS Update

Our Next Mission: “Brain Attack”

Shawn Riley, EMS Deputy Chief, Laconia Fire Dept./LRGHealthcare



As everyone in the Lakes Region EMS and Fire Service Community is well aware: We kick butt when it comes to STEMI. EMS providers in our region are aware of STEMI recognition and treatment. This is one of the best ways we impact patient care as EMS providers. What's next?

“TARGET STROKE”

“Target Stroke” is part of an American Heart Association campaign to improve the outcomes for stroke survivors. Again, EMS will play an integral role in its success and ultimately patients will win.

THE GIST

Just like with STEMI, early recognition is key in stroke care. If a patient is experiencing an **Ischemic Stroke**, s/he can be treated with a clot buster — providing the patient receives it within the first 3 hours of onset of symptoms. Statistically, only 3 to 5% of patients who suffer a stroke reach the hospital in time to benefit from this treatment.

THE 3 TYPES OF STROKES

TIA or “mini stroke” (goes away on its own)

The **Transient Ischemic Attack (TIA)** or “mini stroke” would be better named the “warning stroke.” A TIA is usually caused by a blockage in a cerebral artery that

dissolves quickly on its own. TIAs tend to last 1–5 minutes and, unlike a stroke, leave no lingering damage. This doesn't mean these patients should not be transported. One-third of people who suffer a TIA will have a stroke within the year if they do not receive treatment.

Ischemic Stroke (Clot)

About 87% of strokes are an **Ischemic Stroke**. This is the one we want to target. The ischemic stroke can be treated with clot busters. Think of this as a Heart Attack in the Brain or a “Brain Attack.” A clot becomes lodged in a tiny cerebral artery and deprives the brain tissue of critical blood and oxygen. The clot must be dissolved and the brain tissue re-perfused...rapidly. Ischemic strokes are either clots that form elsewhere and float to the brain (embolism) or a clot that forms at the clogged part of the cerebral artery (thrombosis).

Hemorrhagic Stroke (Bleed)

Hemorrhagic Stroke accounts for 13% of the cases. It is by far worse, having less treatment options. It is most commonly caused by an aneurysm. 30% to 40% of these patients die and 25% or greater will have significant neurological deficit. As you can imagine, giving a clot buster to a brain bleed would not be the cool thing to do.

EARLY RECOGNITION

EMS providers must learn to recognize the signs and symptoms early. The best way to identify a stroke in the field is using the Cincinnati Pre-hospital Stroke Scale. This scale works on three basic observations: **1. Facial**

Cincinnati Pre-hospital Stroke Scale

1. FACIAL DROOP: Have patient show teeth or smile.



Normal:
both sides
of the face
move equally



Abnormal:
one side of
face does not
move as well
as the other
side

2. ARM DRIFT: Patient closes eyes & holds both arms out for 10 sec.



Normal:
both arms
move the
same or both
arms do not
move at all



Abnormal:
one arm does
not move or
drifts down
compared to
the other

3. ABNORMAL SPEECH: Have the patient say “you can't teach an old dog new tricks.”

Normal: patient uses correct words with no slurring

Abnormal: patient slurs words, uses the wrong words, or is unable to speak

INTERPRETATION: If any 1 of these 3 signs is abnormal, the probability of a stroke is 72%.

LRMFA Offers SCBA Fit Testing

The recently-purchased Quantafit Respirator Fit Tester is now in service. Several members of the LRMFA system have attended operational training and are now qualified to conduct the test. To schedule FIT testing, departments are asked to contact DC Beland at 524-9111 or jbeland@lrmfa.org. In most cases FIT testing can be completed in 1½ to 2½ hours, depending on the number of personnel testing. Each test takes less than five minutes. This is possible because we are pre-populating the software with department members' information prior to arrival on-site. At the time of scheduling, a blank roster form will be sent to the department. The department will complete the form and return it to LRMFA allowing the information to be added to the data base. At the completion of the test, each member will receive their test report, and the Chief or his/her designee will receive a summary report on all members. Additionally, LRMFA will store test records in our data base. It is important to remember: The Board of Director's adopted a facial hair policy relative to FIT testing. The policy states: No member shall be FIT tested who presents with a beard (2-days growth), sideburns descending below the ear lobes or moustaches extending below the corner of the mouth.

FIT testing means an ***"an assessment of the adequacy of respirator fit by numerically measuring the amount of leakage into the respirator."***

OSHA

1910.134(c)

"requires the employer to develop and implement a written respiratory protection program with required worksite-specific procedures and elements for required respirator use." Members using respiratory protection (SCBA) should receive a medical evaluation as part of the respiratory protection program. In no way, shape or form does LRMFA certify someone as fit or qualified to wear SCBA as a result of FIT testing.

We look forward to providing this important service to you at your firehouse. 🚒



Capt. Balcom administers test using new equipment.

Droop, 2. Arm Drift, and 3.

Speech. If one of these three signs is abnormal and has come on suddenly, the chances of a stroke are 72%. If two are present the chances are 86%.

EARLY ACTIVATION

One you suspect a "Brain Attack" in the field, it is important to let the hospital know. As we discussed, earlier, a stroke will be either **Hemorrhagic** (can't treat with clot busters) or **Ischemic** (can treat with clot busters). The only way to definitively tell the difference is with a CT scan. If we give the hospital notice as soon as a stroke is suspected, they will have the CT scan clear upon patient arrival or have appropriate technicians en route to do the test. As EMS people are well aware, the CT scan can go down and other arrangements will need to be made to get the "Brain Attack" patients scanned as quickly as possible so they can receive the appropriate treatment.

TIME

One of the most important things an EMS provider (at any level) can do is **get an accurate idea of what time the symptoms began**. Remember: Stroke often causes communication problems for the patient. The family (*who may or may not be going to the hospital*) might be the only ones who can give an accurate account of when and how the episode began. Take a good history. Bring the patient's meds to the hospital with you. Don't forget the time of onset.

The hospital is currently working on its stroke care strategies. You will see more information soon. In the meantime, please study the Cincinnati Pre-Hospital Stroke Scale; use it on all suspected stroke patients; note the time of onset; and give the ER plenty of notice. Also, please feel free to invite me to one of your training meetings so we can talk more about "Brain Attacks" and how EMS can help improve patient outcomes. 🚒

**Join the
LRMFA team
for the Annual
St. Baldrick's
Event!**

**To register visit
www.stbaldricks.org**

**Be a Hero to a Kid
With Cancer.
June 2, 2012
Gilford Youth Center**

***"Grow it
Shave it
Beat it."***



Tilton-Northfield Fire and EMS Center Street Station.

TILTON-NORTHFIELD FIRE & EMS CONT. FROM 5

group, all are still active in the fire service and three have gone on to become career firefighters.

Chief Ober grew up in Ashland and is still a call firefighter there. Through the years he came up through the ranks in that department, holding every position there except captain. He was the Ashland Chief when a job in Tilton-Northfield opened up. He joined that department May 2, 2005 as the Fire Prevention Officer. Prior to that, his first fulltime fire service position was at Lakes Region Mutual Fire Aid as a dispatcher for 10 years.

He became Chief in Tilton-Northfield on December 13, 2010. He has two degrees from Lakes Region Community College: Fire Science and Fire Protection, and is currently finishing the NH Dept. of Education's Certified Public Manager program.

Chief Ober is constantly monitoring the latest electronic equipment to keep his department up-to-date and allow them the quickest access to information at all times. He's found that having a laptop in the apparatus isn't the best solution, so he's focusing on iPads. They

are smaller, more portable, and tougher. Eventually, he's planning on using them for maps, CAD, hazmat information, etc.

The department meetings are held on Mondays, with two being fire training, one an EMS training, and one an officers' meeting. The fire association holds one major fundraiser each year — a sausage/ fried dough booth at Old Home Day. The career firefighters have teamed up with other local professional firefighters in the last two years to participate in a 5k Safety Run. 🚒

LRMFA QUICK FACTS — 2011:

Total phone calls received at and made from LRMFA:

50,416

Admin. Lines = **23,508** 🚒 Emer. Lines = **26,908**

Average calls per day = **138**

Total number of incidents:

21,601

Recent Fires in the LRMFA System



35 Granite St., Northfield. Feb. 10, 2012.



43 Granite St., Northfield. Feb. 23, 2012.

LRMFA Activity Jan. 26 through March 29, 2012

3,528 Incidents (Based on 63 days through 1200 hrs March 29). 56.0 incidents per day

- 1/20 -- East Andover, Meadowlark Lane -- 2nd Alarm Structure Fire.** Andover, Danbury, Franklin, Andover Rescue, Hill, East Andover, and LRMFA. *Two fatalities.*
- 1/28 -- Laconia, Jameson Street -- 1st Alarm Structure Fire.** Laconia, Gilford, Belmont, and Meredith. Meredith EMS to cover Laconia. Occupant smoking while using oxygen.
- 1/29 -- Belmont, Middle Route -- 2nd Alarm Structure Fire.** Belmont, Laconia, Gilford, Tilton-Northfield, Gilmanton, and Franklin to scene. Sanbornton and Meredith EMS to cover Belmont.
- 1/31 -- Bristol, Newfound Lake -- Ice Rescue.** Bristol to scene.
- 2/01 -- Gilford, Gunstock Mountain -- Lost Hikers.** Gilford to scene.
- 2/07 -- Alton, Alton Shores Road -- 1st Alarm Structure Fire.** Alton, Gilmanton, Gilford, Barnstead, New Durham, and Wolfeboro to scene. Farmington to cover Alton.
- 2/10 -- Northfield, Granite Street -- 1st Alarm Structure Fire W/Person Trapped.** Tilton-Northfield and Franklin to scene. Sanbornton and Belmont to cover Tilton-Northfield. *One fatality.*
- 2/11 -- Alton, Lake Winnepesaukee -- Snowmobiles Through The Ice.** Alton, Gilford, and Tuftonboro to scene.
- 2/12 -- Concord, North Main Street -- 3rd Alarm Structure Fire.** Franklin to scene. Laconia and Tilton-Northfield to cover Concord.
- 2/23 -- Northfield, Granite Street -- 2nd Alarm Structure Fire.** Tilton-Northfield, Franklin, Sanbornton, Bel-

mont, Laconia, Gilford, and LRMFA to scene. Belmont and Concord to cover Tilton-Northfield.

- 2/24 -- Strafford, Strafford Road -- MVA W/People Trapped.** Strafford and Frisbie EMS to scene. Three people extricated.
- 3/6 -- Holderness, White Ash Road -- 3rd Alarm Structure Fire.** Holderness, Center Harbor, Meredith, Ashland, Plymouth, Campton-Thornton, Moultonborough, New Hampton, and LRMFA to scene. Waterville Valley to cover Holderness. FMO requested to scene.
- 3/7 -- Waterville Valley, Black Bear Road -- 1st Alarm Structure Fire.** Waterville Valley, Campton-Thornton, Plymouth, Ashland, Holderness, and Woodstock to scene. Center Harbor and Lin-Wood Ambulance to cover Waterville Valley. Rumney to cover Campton-Thornton. Ashland to cover Plymouth.
- 3/12 -- Gilmanton, Griffin Road -- Medical Aid.** Gilmanton to scene. Special call for Paramedic from Belmont. Helicopter LZ at scene.
- 3/15 -- Alexandria, Hutchins Hill Road -- 2nd Alarm Structure Fire.** Alexandria, Bristol, Hebron, Bridgewater, Danbury, New Hampton, Hill, and Plymouth to scene. Franklin to cover Alexandria. Ashland to cover Bristol.
- 3/20 -- Belmont, Higgins Road -- Medical Aid.** Belmont to scene.
- 3/26 -- Alton, Sleeper Island -- 1st Alarm Brush Fire.** Alton, Gilford, Gilmanton, Barnstead, and New Durham to scene. Andover Rescue to cover Alton.
- 3/27 -- Franklin, South Main Street -- MVA W/Person Trapped.** Franklin, Tilton-Northfield, Twin Rivers Ambulance, Sanbornton, and Belmont to scene. Penacook Rescue Squad to cover Franklin. DHART LZ at scene. 🚒

Training programs offered under the \$4.4 million Homeland Security Grant Program will include a host of specific technical rescue courses, which include rescue skills, Rescue Systems I & II, technical trench rescue, technical rope rescue operations, technical confined space rescue, and swift water rescue. A couple of “train the trainer” courses for the new IAFF Fire Ground Survival will also be conducted.

In addition to the technical rescue courses, we will be looking to fill some training gaps in the area of hazardous materials. A primary focus will be to provide current Hazmat team members a much-needed 40-hour refresher course. Additional Hazmat programs will include Hazmat operations and decontamination, as well as some initial technician programs.

ICS classes also eligible for expense recovery will include: H806 Incident Command, ICS 300, and ICS400.

Please note that *only* the courses mentioned above are included in this offering.

Most of you have already seen a significant increase in course offer-

ings over the past nine months. The addition of this grant money will not affect other classes. The Academy will still continue to increase class offerings across the board based on the needs of the state’s first responder community. Therefore, the Academy will be expanding other course offerings not included in the Grant program. Watch for the announcement of these new courses.

These training reimbursement funds must be expended by November 1, 2012. (NOTE: no grace period!) Class posting for the grant program courses noted above will be out soon. Please watch for them. Remember that classes are filled on a first come/first served basis once the application period opens for each program. So, please plan accordingly.

The Department of Safety would like to thank the NH Association of Fire Chiefs, The Professional Firefighter’s of NH, and The State Fireman’s Association, as well as the NH Hazmat Collaborative for their invaluable assistance as we navigate this process.

Questions? Call the Fire Academy direct at 223-4200 or e-mail me at perry.plummer@dos.nh.gov. 🚒



**Many Thanks to
Gator Sign Shop
for their recent
donation of a
banner to
celebrate
Rick Heinis’s
40th Anniversary
of Service to
LRMFA.**

**43 GILFORD EAST DRIVE
GILFORD, NH 03249
603-293-7344**

**2011 LRMFA Annual
Reports are available
at www.lrmfa.org**

Partnering to Promote Fire Safety: LRGHealthcare Senior Safety Day

Did you know that LRGHealthcare has a yearly program to help keep our seniors safe called “Senior Safety Day”? Each October, during fire prevention month and near time change, the Education Services Department organizes a community initiative to do free smoke detector battery changes and installations for communities within our service area. LRGHealthcare promotes the program, takes care of senior participant sign up, and also provides the batteries and smoke detectors. Local fire departments provide the manpower to make it all happen by making the home visits on Senior Safety Day. If your fire department is not currently a partner in this program and you’d like to take part or get more information, please contact Melissa Rizzo, Community Educator, at 934-2060 ext. 8369 or at mrizzo@lrgh.org. 🚒

Free Online Training Opportunities

Listed below are free online training sites. Take advantage of these free classes to increase your knowledge!

- 🚒 www.cfitrainer.net
- 🚒 www.fema.gov (training section)
- 🚒 www.teexwmdcampus.com
- 🚒 www.pipelineawareness.org
- 🚒 www.firstrespondertraining.gov
- 🚒 www.usfa.dhs.gov/nfa/



From the Training Division...

TRAINING OPPORTUNITIES

RAPID INTERVENTION TEAMS.

APRIL 26, 28, 29, 2012

Please go to www.lrmfa.org for more information and application(s). LRMFA and NHFA application required.

RAPID INTERVENTION TEAM REFRESHER.

APRIL 28, 2012

See www.lrmfa.org for more information and application(s).

COMMANDING THE RAPID INTERVENTION TEAM INCIDENT

See www.lrmfa.org for more information and application(s).

COMPANY OFFICER DEVELOPMENT SERIES

LRMFA Communications Center. All programs begin at 1830 hrs. and end by 2130 hrs.

April 2, 2012: Women In the Fire Service/Camp Fully Involved

Lt. Lisa Baldini, Laconia FD and Lt. Jess Wyman Nashua FD

May 7, 2012: Fire Service Occupational Stress

Deputy Chief Deb Pendergast, Laconia FD

June 4, 2012: Fireground Decision Making

Chief Ken Erickson, Laconia Fire Department

July 7, 2012: Strategies & Tactics for Managing Church Fires


DC Deb Pendergast, Laconia Fire Department

LRMFA FIRE SCHOOL. JUNE 2, 2012, 0830-1630 HRS. GILFORD HIGH SCHOOL

Keynote Address: Hookset Fire Mayday Incident
Chief Don DeAngelis, Leadership

Concurrent Afternoon Sessions.

- **Leadership**, Chief DeAngelis
- **Wilderness EMS**, TBA
- **Eng. Ops. Live Burn**, Chief Carrier
- **Fire Pump Operations**, Lt. Madon
- **FIT Testing**

Contact Deputy Coordinator Beland, jbeland@lrmfa.org or call 528-9111 

Sales, Installation and Service for Wireless Communications and Emergency Vehicle Equipment



Ossipee Mountain Electronics

www.omesbs.com

(603) 476-5581 (800) 639-5081

Portable Outdoor Solar Transmitter

Need a Reconditioned Fire Call Box that can be strategically located for special town-municipal functions without the hassle?

Call MFA Today!!!

City Fairgrounds

Parade Routes

Town Parks

Construction Sites

Remote City Roads

Dangerous Intersections

FEATURES:

- One Year Warranty Included
- Solar Power - No AC Voltage Needed
- Reconditioned Radio Alarm Transmitter
- No Phone Lines Needed
- Automatic Self Testing
- Mobile - Easy To Transport
- Transmits FIRE to Monitoring Station
- Weatherproof Cast Metal Housing
- Tamper/Knockdown Feature
- F.C.C. Type Accepted
- Meets and Exceeds N.F.P.A. 72 and 1221
- FM Approved

\$2895.00

Limited Supply!



Mammoth Fire Alarms

Incorporated
176 Walker Street Lowell, MA
01854

(800)995-9808 Fax(978) 934-9131

WWW.MAMMOTHFIRE.COM

People on the Move... New Apparatus...



Lt. Richard Andrews
Gilford Fire Dept.
Promoted to Deputy Chief



FF Jeff Madon
Gilford Fire Dept.
Promoted to Lieutenant



FF Brian Clarenbach
Gilford Fire Dept.
New Hire



FF Nate Hanson
Gilford Fire Dept.
New Hire



FF Nate LeMay
Gilford Fire Dept.
New Hire



Jan Fabian, Admin. Asst.
Gilford Fire Dept.
New Hire



Chief Brad Smith
Franklin Fire Dept.
Retired



Dep. Chief Kevin LaChapelle
Franklin Fire Department
Promoted to Chief



Belmont. 3E1

2011 E-One Typhoon Pumper. Cummins 450HP; Trans.: Allison EVS3000 Automatic; Air Brakes w/engine brake; Hale Qmax 1500 gpm single stage; 1,000 gal. tank; 1,800' of 4" supply, split loaded; ladders: 24' Extension, 14' Roof, 10' Folding; Around The Pump "Cold Fire" Foam System (30 Gal. Tank); Light Tower (3,000 W); Hurst Extrication Equipment; Power Unit, 1 Cutter, 1 Spreader, 3-Rams; 5,000lb Winch.



Belmont. 3U1

2011 Ford F350 pickup with plow.

**WATCH FOR OUR
NEW WEBSITE!
COMING TO A
COMPUTER NEAR
YOU!**

Association Meetings

Meetings are the last Thursday of
odd-numbered months.

May 31, 2012: Dinner, 1900 Meeting. Program TBA.
Gilford Fire Department

July 26, 2012: Information TBA

Sept. 27, 2012: Information TBA

Check www.LRMFA.org for locations and updated
information.

First Quarter Statistics...

From Jan. 1, 2012 through March 31, 2012

Incidents Dispatched:	January 2012	1,746
	February 2012	1,749
	March 2012	1,569
	Total	5,064

Resources Available:

Engines	92	Tankers	15
Ladders	7	Rescues	23
Forestry	36	Ambulances	37
Utilities	5	Fire Boats	25
Towers	6	Air Units	5
ATVs	12	Command Vehicles	21

LRMFA HEADQUARTERS, LACONIA, NH



PHOTO COURTESY BILL HEMMEL. LAKESREGIONAERIALS.COM ©2009

Statistics:

- 🚒 Began operations in September of 1971. Moved operations to our current facility in June of 2000.
- 🚒 Dispatches Fire and Medical Emergencies for 35 communities and 35 Fire and EMS Agencies.
- 🚒 Serves a population of 115,112 residents (2010 Estimate).
- 🚒 Is spread over 5 NH Counties, covering a geographical area of 1,494 square miles (16% of the area of the State of NH — 1.5 times the size of the state of Rhode Island).
- 🚒 Protects over \$19.6 billion dollars of property (2010 Valuation).
- 🚒 Has an operating budget of \$1,059,880 (2012 budget).
- 🚒 Has 9 full-time and 10 part-time employees.
- 🚒 Dispatched 21,601 incidents during 2011 (59.18 calls per day).
- 🚒 Dispatched 21,413 incidents during 2010 (58.67 calls per day).
- 🚒 Dispatched 19,837 incidents during 2009 (54.35 calls per day).

From the Chief...

Chief James R. Hayes



There has been a flurry of activity (not including snow flurries) within the Lakes Region Mutual Fire Aid system over the last few months. Quite a number of fire incidents have occurred including two fatal fires. Along with the emergency activity, there have been a lot of

other things going on. We have secured a vendor for the new Computer Aided Dispatch system and have begun ordering the necessary equipment. This project should be moving ahead very quickly, with a projected completion date of late fall. SCBA face piece fit testing is available to all departments now. The Training Division is quite active with multiple training programs available. Space doesn't allow me to write about everything taking place, but watch the website (that, too, is changing) for information about what is happening in the Lakes Region. 🚒

LRMHealthcare

AL's Breakfast

Con-Ed for EMS and Nursing

2012 SCHEDULE

Wednesday	May 2nd	Gilford
Wednesday	June 6th	Laconia
Enjoy your	July	Summer
Enjoy your	August	Summer
Wednesday	September 5th	Sanbornton
Watch for	Paramedic	RTP
Wednesday	November 7th	Gilford
Wednesday	December 5th	Laconia

All Breakfasts will be from 0900-1100hrs

Any Question please contact Shawn Riley 524-6881 or Bruce Goldthwaite 934-2205

Who the heck is AL?



Fire Apparatus Sales & Service Since 1991

**Lakes Region
Fire Apparatus
— providing
exceptional
service and new
apparatus for
more than twenty
years.**



LINCOLN, NH



CHESTER, NH



**PO Box 970, West Ossipee, NH 03890
Phone: 603-323-7117 • Fax: 603-323-7447
Email: info@lakesfire.com • www.lakesfire.com**





Lakes Region Mutual Fire Aid Association
62 Communications Drive
Laconia, NH 03246

**Save the Date for
the LRMFA 2012
FIRE SCHOOL:
June 2, 2012.**

**Additional information to
be posted at
www.lrmfa.org as
it becomes available.**

Training & Education Opportunities

- **Trauma Grand Rounds.** Last Friday of each month.
7:30 a.m. at either LRGH or FRH. For information,
contact Shawn Riley at 524-6881.
- **ALS Breakfasts — Wednesdays. 0900–1100.**
Nurses, EMTs, EMT-Is are all welcome to attend.
Please contact Shawn Riley at 524-6881 or Bruce
Goldthwaite at 934-2205 with questions.

2012 Rural Hitch Deadlines

Second Quarter (Apr/May/June):
June 21, 2012

Third Quarter (July/Aug/Sep):
Sept. 20, 2012

Fourth Quarter (Oct/Nov/Dec):
Dec. 20, 2012